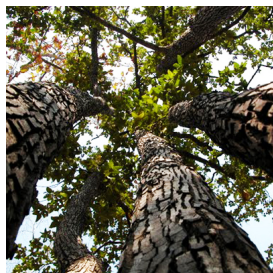


Terminalia Tomentosa, Asan - 0.5 Kg Seeds



Common name: Asan, Indian Laurel, Silver grey wood, White chuglam • Hindi: ??? Asan, ??? Saj • Marathi: ?? Ain, ??? Asan, ?????? Satada, ?????? Shardul • Tamil: ?????????? Aruccunam, ?????????? Karumarutu, ?????????? Marutamaram • Malayalam: Matthi • Telugu: ?????????? Innu maddi, Nalla maddi • Kannada: Banappu, Karimaddi, Sadada, Unapu mara • Bengali: Asan • Oriya: Sahaju • Sanskrit: ?????????? Raktarjun
Botanical name: Terminalia elliptica Family: Combretaceae (Rangoon creeper family) Synonyms: Terminalia alata

Rating: Not Rated Yet

Price

Sales price R 1,833

Discount

[Ask a question about this product](#)

Description Terminalia elliptica is a species of Terminalia native to southern and southeast Asia in India, Nepal, Bangladesh, Myanmar, Thailand, Laos, Cambodia, and Vietnam., It is a prominent part of both dry.

Common name: Indian Laurel

Color: yellow

Bloom time: Seasonal bloomer

Height: 30.00 to 60.00 feet

Difficulty level: easy to grow

Planting & Care

Clean away from around the base of the rosebushes any trimmed debris that can harbor disease and insects.Late in the season, stop deadheading rugosas so that hips will form on the plants; these can be harvested and dried on screens, away from sunlight, then stored in an airtight container.

Sunlight: Full sun

Soil: well-drained soil

Water: Medium

Temprature: 22 - 35°c

Fertilizer: Apply any organic fertilizer

Care:

- Plants do not thrive in Zones 9 to 10 without a period of refrigeration; they need a cold, dormant period.

- Select a site with soil that drains well.
- How can you tell? After a good rain, find a spot that is the first to dry out.
- Water trapped beneath the scales may rot the bulb, so a well-drained site is essential.
- Also, select a site that gets full sun.
-

Care:

- The vining varieties require a support structure as some can get 15 feet tall.
- All plants prefer sun to light shade sites with well-draining and moderately fertile soil.
- Install the plant in the ground at the same level it was growing in the nursery pot.
- Most plants are grafted onto the common rootstock because of its superior hardiness.
-

Special Feature:

Fruit tree for frost free climates. Interesting house plant that may easily be grown from seed.

Use

Medicinal use:

- T.
- chebula (dried fruit) 25 and T.
- arjuna (bark) 26 , 27 have been investigated for potential activity against certain human cancer cell lines.
- Growth inhibition and cytotoxic effects are apparent, with concentration-dependent apoptosis and cell necrosis as the proposed mechanisms.

Note:

for medicinal use

Reference:

<http://www.missouribotanicalgarden.org/> <http://www.flowersofindia.net/>

Reviews

There are yet no reviews for this product.