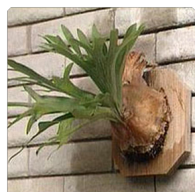


## Staghorn Fern - Plant



Platycerium bifurcatum

Rating: Not Rated Yet

**Price**

Sales price R 605

Discount

[Ask a question about this product](#)

Description Winter hardy to USDA Zone 9-12. In St. Louis, grow indoors in a warm, humid environment in bright indirect light including up to several hours of filtered sun. Avoid full sun. For upright display, tie rootball to a corkboard or slab of bark with insertion of peat moss around the crown.

**Common name:** Platycerium bifurcatum

**Color:** Green

**Bloom time:** Non-flowering

**Height:** 2.00 to 3.00 feet

**Difficulty level:** easy to grow

### Planting & Care

Though you can find young staghorn ferns sold in pots, mature plants need to be mounted to a board or hung in a hanging basket. Why? Because, like air plants, staghorn ferns are epiphytic plants, which means that in they grow on other plants or trees in their natural growing environments.

In the tropics (and even warmer parts of the US like Florida), staghorn ferns grow to truly massive proportions, jutting dramatically out of the crooks of trees. Their roots hold them in place, and they absorb water and nutrients through their fronds.

**Sunlight:** Part shade

**Soil:** well-drained soil

**Water:** Medium

**Temperature:** 30°F

**Fertilizer:** Apply any organic fertilizer

**Care:**

- Use a spray-bottle that emits a fine, ambient mist, such as a brass mister.
- Mist the entire plant, focusing on the underside of the antler fronds and the shield fronds.
- 
- Use a spray-bottle that emits a fine, ambient mist, such as a brass mister.
- Mist the entire plant, focusing on the underside of the antler fronds and the shield fronds.

**Special Feature:**

Roots must never be allowed to dry out. Occasionally immerse entire root ball (not the fertile fronds) in water for several minutes and then drain.

Use

**Culinary use:**

- Use a balanced, water-soluble fertilizer (ratio of 1:1:1).
- During

**Ornamental use:**

- A hanging fern makes a great ornamental adornment for any large tree or wall in the garden.
- For a substrate, most simply use a flat board

**Note:**

No serious insect or disease problems

**Reference:**

<http://www.missouribotanicalgarden.org/PlantFinder/PlantFinderDetails.aspx?kempercode=b615>