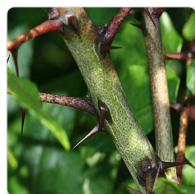


Prickly-Ash - Plant



toothache tree

Rating: Not Rated Yet

Price

Sales price R 123,456

Discount

[Ask a question about this product](#)

Description *Zanthoxylum americanum*, the common prickly-ash, common pricklyash, common prickly ash or northern prickly-ash, is an aromatic shrub or small tree native to central and eastern portions of the United States and Canada.

Common name: toothache tree

Color: Yellowish - green

Bloom time: April

Height: 15.00 to 20.00 feet

Difficulty level: easy to grow

Planting & Care

Grows well in woods, thickets and along rivers on the Eastern U.S. Coast from Florida to Canada. Also grows well in Texas, Arkansas and Nebraska. Does best in zones 3-7. Plant seedlings indoors in late winter or early spring. Once plants reach out 10cm tall, they can be moved outside.

Sunlight: Full Sun to Partial Shade

Soil: well-drained soil

Water: Medium

Temperature: about 40 degrees

Fertilizer: Apply any organic fertilizer

Care:

- Prickly ash has not undergone any modern scientific safety evaluation.
- It contains potentially toxic alkaloids; whether or not these lead to any harmful effects remains unknown.
- 3,4 Safety in young children, pregnant or nursing women, or people with severe liver or kidney disease has not been established.
-

Special Feature:

This tree or shrub has somewhat limited ornamental value. Good for hedgerows, screens, naturalized woodland areas or integrated into native plantings.

Use

Medicinal use:

- It has also been used to stimulate circulation of the blood in intermittent claudication and Raynaud's disease.
- It is a common topical poultice for tooth decay, tooth pain, dry mouth, throbbing/aching muscles and skin infections.
- It is also used as a treatment for digestive upset, including gas, diarrhea and intestinal parasites.

Ornamental use:

- The plant is used for ornamental purpose.

Note:

:for medicinal use

Reference:

<http://www.missouribotanicalgarden.org/PlantFinder/PlantFinderDetails.aspx?kempercode=m900>

<https://www.cancercarewny.com/content.aspx?chunkid=111794>