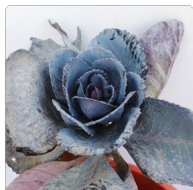


Ornamental Cabbage, Ornamental Kale (Blue) - Plant



Very few flowers bloom during the cold winter months, and the foliage which graced the garden with it's beautiful fall colors, has long since fallen to the ground. To fill this winter time void, botanists looked to Brassica oleracea.... more commonly known as Cabbage. Broccoli, edible Kale, Collard Greens and Cauliflower all share this botanical designation

Rating: Not Rated Yet

Price

Sales price R 309

Discount

[Ask a question about this product](#)

Description

Description for Ornamental Cabbage, Ornamental Kale (Blue)

Ornamental Cabbages and Kales look much the same as their edible cousins, but the ruffled foliage is much fancier and more colorful. Brassica plants do not tolerate summer heat well, but are extremely cold-tolerant.

Common name ornamental cabbage	Flower colours Blue-green	Bloom time Rarely flowers	Height 1.00 to 1.50 feet	Difficulty easy to grow
-----------------------------------	------------------------------	------------------------------	-----------------------------	----------------------------

Planting and care

These plants can be grown indoors in a large pot. However, the length of time that they will last in the home will vary, depending on the temperature. A brightly lighted, cool room, is the best location. Kale and Ornamental cabbage plants prefer cool weather. Although Kale plants may be set out in the spring and allowed to grow through the summer, the best time to plant them is in the early fall.

Sunlight Full Sun to Partial Shade	Soil well-drained soil	Water Medium	Temperature They can survive winter temperatures as low as 5Â° F. if they are gradually acclimatized	Fertilizer Apply any organic fertilizer
---------------------------------------	---------------------------	-----------------	---	--

Caring for Ornamental Cabbage

Although Kale and Ornamental Cabbage seeds can be sown indoors at any time of the year, without cool temperatures the plants won't

attain much color. For starting seeds indoors, I recommend that they be sown directly into a large 6-8 inch pot, to avoid the problems associated with transplanting. Ornamental Cabbages and Kales look much the same as their edible cousins, but the ruffled foliage is much fancier and more colorful. Brassica plants do not tolerate summer heat well, but are extremely cold-tolerant. They can survive winter temperatures as low as 5Å° F. if they are gradually acclimatized. While a sudden cold snap can be deadly, light and moderate frosts will intensify the brilliant coloring of these plants.

Typical uses of Ornamental Cabbage

Special features: Mass plantings. Border fronts. Edging. Containers. In fall, mix with chrysanthemums, grasses and asters. Colorful leaves make an attractive food garnish.

Ornamental use: The plant is used for ornamental purpose.

References

<http://www.missouribotanicalgarden.org/PlantFinder/PlantFinderDetails.aspx?kempercode=b738>

<http://www.thegardenhelper.com/kale.html>