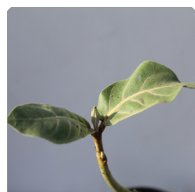


## Mandar, Rui - Plant



A drought resistant shrub with milky sap. It is a poisonous plant but with certain medicinal uses. The pods come as twins.

Rating: Not Rated Yet

### Price

Sales price R 309

Discount

[Ask a question about this product](#)

Description

## Description for Mandar, Rui

Calotropis procera is a species of flowering plant in the family Apocynaceae that is native to North Africa, Tropical Africa, Western Asia, South Asia, and Indochina.

Common name	Flower colours	Bloom time	Height	Difficulty
Mandar, Rui, Calotropis procera, Rubber bush, apple of Sodom.	Pale purple to white	Seasonal bloomer	6.00 to 8.00 feet	Easy to grow

## Planting and care

If it's too shady, the stems will attempt to lean towards the sun or get spindly and fall over. Most of the popular varieties prefer acidic to neutral soil, but some are lime-tolerant or prefer alkaline soils (e.g., Madonna lilies). Loosen the soil to a depth of 12 to 15 inches.

Sunlight	Soil	Water	Temperature	Fertilizer
Full sun to part shade	Well-drained soil	Dry to medium	55-60 degree C	Apply any organic fertilizer

## Caring for Mandar

- In active growth, water freely especially if rainfall is less than 1 inch per week.
- Keep lilies mulched so that their roots are cool.
- The mulch should feel moist but not wet.
- Apply a high-potassium liquid fertilizer every 2 weeks from early spring until 6 weeks after flowering.

## Typical uses of Mandar

**Special features:** Where winter hardy, grow as a hedge or train as a small tree. Where not winter hardy, grow in containers which must be overwintered indoors. Could be grown as an annual where not winter hardy.

**Ornamental use:** The plant is used for ornamental purpose. Its generally kep indoor in living room and in terrac area.

## References

- <http://www.missouribotanicalgarden.org/>
- <http://www.flowersofindia.net/>